

# FLAT CABLE EMI CORES / FP TYPE

## APPLICATIONS

- ◆ Internal floppy disk and harddisk ribbon cables
- ◆ Internal ribbon cables between circuit boards and data connectors
- ◆ Internal ribbon cables with series digital signal busses



## MATERIAL

B8 B10 B15

## ORDERING CODE



## SHAPES

Fig.1

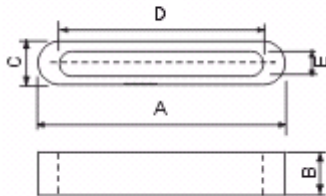
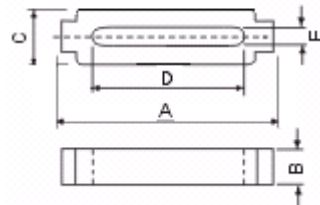


Fig.2



CORE MASTER ENTERPRISE CO., LTD.

<http://www.coremaster.com.tw>



## FLAT CABLE EMI CORES / FP TYPE

**DIMENSIONS (UNIT: mm)**

Part No.	Fig.	Dimension				
		A	B	C	D	E
FP-12X19X9	1	12.0 ± 0.3	19.0 ± 0.5	9.0 ± 0.3	7.5 ± 0.3	4.5 ± 0.3
FP-13.5X6X2	1	13.5 ± 0.3	6.0 ± 0.3	2.0 ± 0.3	11.0 ± 0.3	0.5+0.4-0
FP-16X8X5	1	16.0+0.2-0.5	8.0 ± 0.3	5.0+0-0.6	11.5+0.5-0.1	0.5+0.5-0
FP-18X8X5	1	18.0 ± 1.0	8.0 ± 0.5	5.0 ± 0.3	14.0 ± 0.5	1.0 ± 0.5
FP-19X6X6.5	1	19.0 ± 0.8	6.0 ± 0.5	6.5 ± 0.3	13.5 ± 0.6	1.5 ± 0.3
FP-19X12X6.5	1	19.0 ± 0.8	12.0 ± 0.5	6.5 ± 0.3	13.5 ± 0.6	1.5 ± 0.3
FP-23.8X12.5X6.3	1	23.8 ± 0.7	12.5 ± 0.5	6.3 ± 0.5	18.4 ± 0.5	1.1 ± 0.3
FP-23.8X12.5X6.5	1	23.8 ± 1.0	12.5 ± 0.6	6.5 ± 0.5	18.5 ± 0.7	1.5 ± 0.5
FP-25X12X5	1	25.0 ± 0.8	12.0 ± 0.5	5.0 ± 0.4	21.0 ± 0.7	1.2 ± 0.3
FP-28X10X7.7	2	28.0 ± 0.8	10.0 ± 0.4	7.7 ± 0.4	23.0 ± 0.5	1.4 ± 0.2
FP-28X14.6X7.7	2	28.0 ± 0.8	14.6 ± 0.4	7.7 ± 0.3	23.0 ± 0.5	1.4 ± 0.3
FP-29X10X8	1	29.0 ± 0.8	10.0 ± 0.5	8.0 ± 0.5	22.0 ± 0.8	2.5 ± 0.4
FP-31X12X5	1	31.0 ± 0.8	12.0 ± 0.5	5.0 ± 0.3	27.0 ± 0.8	0.5+0.7-0.1
FP-33.5X12X6.5	1	33.5 ± 1.0	12.0 ± 0.5	6.5 ± 0.5	27.5 ± 1.0	1.5 ± 0.5
FP-40X12X6.5	1	40.0 ± 1.2	12.0 ± 0.5	6.5 ± 0.3	33.5 ± 1.5	1.5 ± 0.3
FP-41X15X7.7	1	41.0 ± 1.2	15.0 ± 0.4	7.7 ± 0.4	34.5 ± 1.2	1.8 ± 0.4
FP-49.6X12X6.5	1	49.6 ± 1.5	12.0 ± 0.4	6.5 ± 0.5	43.0 ± 1.0	1.5 ± 0.5
FP-57.9X12X7	1	57.9 ± 0.7	12.0 ± 0.3	7.0 ± 0.3	52.0 +1.0-0.2	1.3 + 0.6-0

**CORE MASTER ENTERPRISE CO., LTD.**



<http://www.coremaster.com.tw>